

Note: This tutorial will guide you on how to use the "Just Proceed" function at the Ordering Page, Preflight (Business Card) and Resend Pending file page. To understand more on the criteria problems, please refer to Help > Tutorial > Common problems and solutions.

Step 01: Select your order specifications. (For New Order)

Print Method:

Product:

Package:  Normal  2in1  3in1  4in1  5in1  6in1  7in1  8in1  9in1  10in1

Size:

Paper:

Quantity:

Print Colour:  4C (Both)  4C (Front)

Step 02: Upload your artwork.

Front

Accepted upload file format : pdf,jpg,jpeg,tiff,zip

Back

Accepted upload file format : pdf,jpg,jpeg,tiff,zip

(?)Note

Choose the file upload method that is most suitable for your file size.

Click Browse to select the file you want to upload.

### Step 03: Choose the "Just Proceed Criteria".

Please click on the criteria that you wish to "Just Proceed" for this artwork:  
(Please ignore this if you wish us to notify you if your artwork contains any of these errors.)

Select All **If you wish to proceed with all the criteria stated, please check on "Select All". All boxes will be automatically selected.**

- Artwork contains low resolution image(s) (dpi)
- Similar colour less than 10%
- Colour tints (toning) less than 10%
- Appearance of White Line
- No Bleeding
- Artwork contains RGB Colour Mode
- Artwork contains Pantone Colour Mode
- Spot UV Full Bleed
- Spot UV artwork in JPEG file

**Select the "Just Proceed Criteria" you want by clicking the check box.**

### Resend Page

Job No : 2230-00743  
Product :  
Date Pending : 18-12-2011 10:28:10  
Status : Pending  
Pending File :  
Pending Problem : Missing Fonts,Fonts pixelate,Background design not expanded to Full Bleed  
Pending Remark :  
Date Resend : 25-12-2011 11:28:28  
Resend Artwork : Upload by Web

**Choose the file upload method that is most suitable for your file size.**

File Name

**Click Browse to select the file you want to upload.**

Please click on the criteria that you wish to "Just Proceed" for this artwork:  
(Please ignore this if you wish us to notify you if your artwork contains any of these errors.)

Select All **If you wish to proceed with all the criteria stated, please check on "Select All". All boxes will be automatically selected.**

- Artwork contains low resolution image(s) (dpi)
- Similar colour less than 10%
- Colour tints (toning) less than 10%
- Appearance of White Line
- No Bleeding
- Artwork contains RGB Colour Mode
- Artwork contains Pantone Colour Mode

**Select the "Just Proceed Criteria" you want by clicking the check box.**

Note :

**Submit your new artwork.**

#### Step 04: Select Delivery information. (For New Order)

---

Delivery Information

Default address (as in profile)

EA Admin (E100002)  
28-A, 2ND FLOOR, JALAN SS 22/89  
CAMBODARA LIFTWORKS  
08150 PETALING JAYA, KEDAH  
641180 / 6010400000

Other

---

Nett Total

I confirm that I have read and understood all the [Terms and Conditions](#).

#### Step 05: Submit Order by acknowledging the Terms and Conditions.(For New Order)

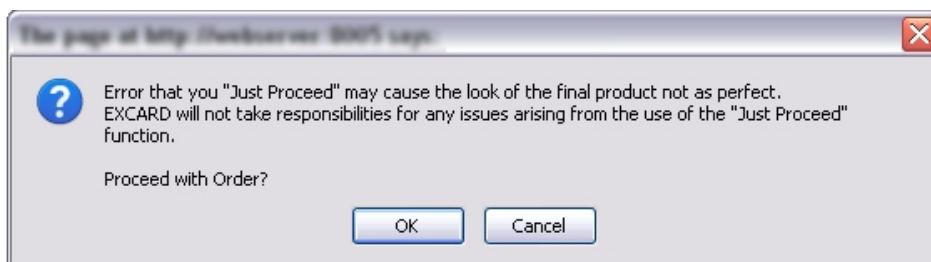
---

I confirm that I have read and understood all the [Terms and Conditions](#).

#### Step 06: Order Confirmation.

---

After you click "Submit Order", it will pop up a message and ask for your confirmation. If you confirm to proceed with the "Just Proceed Criteria" please click "OK".  
If you do not agree please click "Cancel" and remove all the tick(s) on the "Just Proceed Criteria" and submit your order.

**Important:**

1. As you resend new artwork, the previous "Just Proceed" criteria that you choose earlier will be wave/removed/ not entitle for the new resend artwork. You are require to re-choose "Just Proceed" criteria for your new artwork.